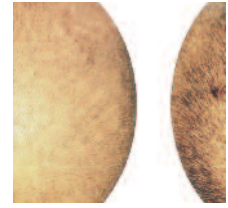
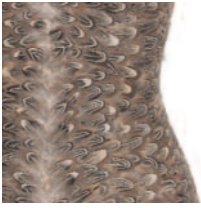


sarah misselbrook



Contextual Statement

Sarah Misselbrook, born in the UK in 1977, received a BA Honours degree in Fine Art at Nottingham Trent University which saw the beginning of her multi-media practice addressing issues such as the body as canvas and consumer in response to Western societal expectations placed upon it. Misselbrook completed a qualification focussing on disordered psychology as well as gaining her PGCE in 2004 from the University of Southampton. In 2007 the artist completed a Postgraduate Diploma in Fine Art at the Cyprus College of Art and has received a distinction level Masters in Fine Art at Winchester School of Art.

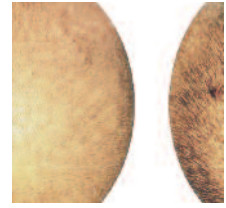
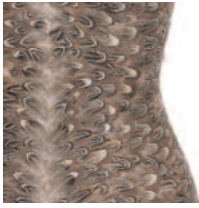
Misselbrook has completed placements including: workshops for people with physical disabilities at the Hexagon centre; Associate Lecturer in Art & Design at Southampton City College; Artist Facilitator for 'a space' arts organisation and Creative Practice Representative at the Millais Gallery, Southampton. The artist has received multiple grants from Arts Council England and a Leonardo da Vinci Grant from the Grampus Heritage Fund. Misselbrook has completed multiple commissions for schools, colleges and business premises and in 2009 installed works at the Fenwick 2 Health Centre in the New Forest. Misselbrook's artworks have appeared in group and solo exhibitions in South coast galleries, London based and international venues.

The artist is interested in individual control and consumption. Obsessive and routine acts of measuring and perfecting envelops both Misselbrook's creative process whilst commenting on the disciplined quest for an unattainable bodily perfection. The use of chocolate, soap, latex, wax, degradable or edible materials presents the seductive yet simultaneously repellent nature of human anatomy. The juxtaposition of hard against soft and sensual against skeletal has become her visual language of a struggle within and of a body.

The artist's degree show presented 'Followed', a skeletal vertebrae cast in white chocolate morphed into a pair of cupped hands as though waiting for absolution, 'Monthly', documenting the artist shaving her head and 'Pure', the artist's torso cast in soap, routinely washed away in exhibition. In 2004, '1m2', a cast of the artist's body was produced in response to a call for entries which limited the work to a metre in any direction. The work is strapped into a steel cage and spikes aggressively defend it. This work has since been exhibited in a underground medieval vault, the Southampton City Art Gallery and The Crypt in St. Pancras Church. In 2006, a solo exhibition at the Bargate Monument gallery presented 'Misplaced', the artist in a steel cage with elongated arms and knife and fork attachments and 'Self-conscious', a looped video showing the meticulous self-policing of the artist's face.

Misselbrook's Masters degree show included sculptural installation and recorded performances conveying educational, religious and submissive acts in quests for perfection. This structured behaviour and performance is providing a new dimension for the artist, opening up her practice and interrupting controlled processes and displays. Misselbrook now looks to develop a more socially engaged practice exploring acts of self starvation in feminist art and relating this to the disordered psychology of the anorexic 'patient' as well as ritualistic social gatherings and experiences withing the making process.

sarah misselbrook



Curriculum Vitae

Sarah Misselbrook

81 Park Road, Chandlers Ford, Eastleigh, Hampshire, SO53 1GJ, UK

Vall de Barranc, Poligon 6, Pacela 53, Riba-roja d'Ebre, 43790, Spain

d.o.b. 05/10/77

m. +44 (0)7540 100555 / +34 608256577

e. info@sarahmisselbrook.com

w. www.sarahmisselbrook.com

Education

Masters Degree Fine Art with Distinction	2011	Winchester School of Art, Uni of Southampton
Post Graduate Diploma in Fine Art	2007	Cyprus College of Art
PGCE (PCET)	2004	University of Southampton
A/S Psychology Grade A	2002	Itchen College
BA (Hons) Fine Art First Class Honours	2000	Nottingham Trent University
Nat. Dip. Foundation Studies Art & Design	1997	Portsmouth School of Art

Training Courses

Emotional First Aid for Young People Trainer Licence	2011	Ashurst Education Centre
Emergency Aid in the Workplace	2006	St. John Ambulance, Bitterne, Southampton
CityBit web based learning resources	2004	Southampton City College
IT, Microsoft office, communication, teamwork, health and safety, record keeping and confidentiality	2003	Southampton City College
Course Representative Training Award	1999	Nottingham Trent University
Full and Clean Driving License	1998	

Professional Experience

Creative Director

Grish Art - Public and Private Commissions/Exhibitions, Graphic/Web Design and Photography

September 2000 - current

- To liaise with funding bodies to produce work for exhibition, commission and on client request
- To organise events for learners and deliver lectures based on exhibitions
- To produce detailed project proposals, progress reports and evaluations
- To produce financial accounts including invoicing, sales, income and expenditure reports
- To develop and maintain effective industrial links

Artist & Project Co-ordinator 'Portes a l'Art'

Ajuntamiento de Riba-roja D-Ebre

February 2013 (3 year project)

- To project manage public commission by local and global practitioners
- To oversee material requirements, budgets and allocation of funding submitting expenditure record upon completion
- To liaise with local artists and recruit global artists to reside in the village and create temp/perm artwork
- To manage all marketing and publicity of the project

Co-founder of off-grid Arts and Music festival 'Riba Rocks' - La Vall, Riba-roja d'Ebre, Catalunya

September 2013 - ongoing

- To co-ordinate international practising artists from project brief to installation on festival site
- To oversee material requirements and budgets
- To manage all marketing and publicity of the festival including web, social media and local/international press
- To co-ordinate musical acts, spoken performances including poets, spoken word artists and workshop providers
- To deliver practical and theoretical workshops on off-grid living, alternative energy and eco-creativity

Artist facilitator ArtVaults Season 4 2008 - a space arts organisation April 2008 - September 2008

- To chose two winning applications for the 'New Creators' project as part of selection day panel
- Project development activities including mentoring and practical sessions at school and college
- To oversee all installation of the works created for the New Creators project including technical assistance, health and safety procedures by given deadline
- To manage the budget for the New Creators for materials, equipment hire and installation costs, submitting expenditure record and invoice upon completion
- To assist with all marketing and publicity of the event, to attend press days and photo opportunities

Client Services Administrator - Idealogy Ltd Marketing Consultancy January 2006 - June 2006

- Client administration including liaising with appropriate external suppliers to complete design projects
- Liaising with design and production studios to update job status software application
- Data purchasing for global mail-outs
- Using FileMaker to enter purchase orders, expenditure invoices, job status to report to account executives
- Initial communication with client to receive project brief, formatting requirements to design studio

Associate Lecturer - Art & Design Department, Southampton City College Sept 2002 - August 2005

- Teach and assess on courses agreed with Art & Design Curriculum Team Leader
- To be personal 1:1 tutor to students as required
- To prepare detailed lesson plans, evaluations and learner tracking evidence
- To maintain accurate records of progress towards targets and provide detailed written reports
- To continue professional development ensuring current knowledge of equality of opportunity, differentiation, health and safety and learning styles

Art Workshop Leader - Hexagon Centre, Hampshire Dec 2001 - Feb 2002

- To provide sculptural, mould making, casting, photography workshops for physically disabled clients and clients with learning disabilities
- To provide 1:1 and group mentoring for client creative projects

Personal Tutor - 'Home-School' Tutoring July 2000 - Sept 2002

- Tutoring children and young adults with social and educational difficulties in all subjects using creative techniques

Grants/ Fellowships

Ajuntamiento de Riba-roja D'Ebre, Catalunya	2012/ 13	Funding to produce public commissions 'Portes a l'Art'
Grants for the Arts - Organisation - Fenwick 2	2008/9	Arts Council England
Leonard Da Vinci Grant	2007	Grampus Heritage Fund
Grants for the Arts - Individual	2006	Arts Council England
Grants for the Arts - Individual	2004	Arts Council England
Grants for the Arts - Individual	2003	Arts Council England

Selected Exhibitions (* solo shows marked by asterisk)

2012		Protection (Collaboration)	Riba-roja d'Ebre, Catalunya, Spain
2011		WSAMA (catalogue)	Winchester School of Art, Winchester, UK
		Pause	Winchester School of Art, Winchester, UK
2010		Cages Bird Sings	The Crypt Gallery St Pancras Church, London, UK
2009	*	Human - Nature	The Fenwick 2 Wellbeing Centre, The New Forest, UK
2008/09		Collectible	Bargate Monument Gallery, Southampton, UK
		Urban Soul Festival	Eleftheria Square Park, Nicosia, Cyprus
		Read Me	Havant Arts Centre, Havant, UK
		How to tell yourself from a tv	En Plo Gallery, Pafos, Cyprus
2007	*	Unnatural Selection	Tc's Rock Bar, Pafos, Cyprus
		ela,ela (catalogue)	La Viande, Shoreditch, London, UK
		resurgence (catalogue)	Langstone Gate, Havant, UK
		ela,ela (catalogue)	Cyprus College Of Art, Pafos, Cyprus
		ela,ela (catalogue)	Idrima Panicos Mavrellis, Lemesos, Cyprus
2006		Christmas exhibition	Cyprus College of Art , Pafos, Cyprus
	*	1m2	Southampton City Art Gallery, Southampton, UK
	*	Affirmation	The Bargate Monument, Southampton, UK
2005	*	Sarah Misselbrook (catalogue)	Havant Arts Centre, Havant, UK
2004		End of Year Show	Michael Naimski Gallery, London, UK
		Human	a space, Southampton, UK
	*	Absolution	ArtVaults, Southampton, UK
		The Body	One Tree Gallery, Petersfield, UK
	*	Mind Consuming Body	a space, Southampton, UK
2003		Self Portrait	Southampton City Gallery, UK
	*	Sarah Misselbrook	Michael Naimski Gallery, London, UK
	*	Feast Your Eyes (catalogue)	Beatrice Royal Gallery, Eastleigh, UK

Visiting Artist Lectures (guest lectures/workshops/critiques)

2014	Artist talk and presentation, NLCS Jeju, Republic of Korea
2012	Sculpture, casting and design workshop for Students with Learning Difficulties, Andover, Hampshire
2011	Sculpture workshop for 4 primary schools, Eastpoint Centre, Southampton
2011	Impression casting, Young Carers Group, Basingstoke
2010	Well-being art workshops, Bedford House, Southampton
2010	Large scale sculptural workshops, Hardley School, Southampton
2010	3D body casting workshops, Hightown Youth Centre, Southampton
2009	3D sculptural and casting workshops, Highcliffe College, Christchurch
2009	Drawing from the figure in 2D and 3D, adult short course at Artsway, Hampshire
2008	Artist presentation, Cyprus College of Art, Pafos
2007	Artist presentation, Cyprus College of Art, Pafos
2006	An evening with the artist, Bargate Monument Gallery, Southampton
2005	Undergraduate Critiques, Southampton Solent University, Southampton
2005	Guest Lecture, Southampton Solent University, Southampton
2004	Artist Talk, a space gallery, Southampton
2003	Guest artist, Lee Peck Greenfield corporate event, Beatrice Royal Gallery, Eastleigh
2002/3	Transitional Classes, Barton Peveril College, Eastleigh
2002	Sculptural Workshops, Oakland's Community School
2002	Conceptual Self-portrait Drawing workshop, St Anne's School, Southampton
2001	Life Drawing workshops, St Anne's School & Sixth Form College, Southampton
2001	Arts Festival 3D Workshops, Sholing School, Southampton

Commissions

2012	Large scale outdoor permanent mural, Riba-roja d'Ebre, Catalunya, Spain
2010	Large scale outdoor permanent sculptural installation, Hardley School, Southampton
2008/9	Permanent installation of works at Fenwick 2 Health and Well Being Centre, New Forest
2007	Sculptural wedding bouquet, private commission, Southampton
2005	Steel figurative archway, Fruit Bar, Dolphin Hotel, Southampton
2004	Figurative bed head rest, Dolphin Hotel, Southampton
2002	Figurative relief mural, Oaklands Community School, Southampton
2001	Tiled wall mounted sculpture, Sholing School, Southampton

Artist in Residence

2014	14 day residency creating artwork for permanent installation, NLCS Jeju, Republic of Korea
2012	5 day residency creating artwork for temporary installation, Andover, Hampshire
2009	4 day residency creating artwork for permanent installation, Highcliffe College, Christchurch
2003	3 day residency creating artwork for 1 month installation, Southampton Saab, Southampton
2002	4 day residency with out of school learning group, Oaklands Community School, Southampton
2001	3 day casting workshops Year 9-11, Sholing School, Southampton

Professional Service

2005-6	Creative practice representative, Board Member, Millais Gallery, Southampton
--------	--

Technical Abilities

My practice is multi-disciplined and crosses the boundaries between 2 dimensional, 3 dimensional, curating, installation and photography. Technical abilities within the realisation of my own work as well as experience in teaching these skills to others include:

- Sculptural modelling, carving, casting, and construction techniques - wire armature construction/ mig welding/soldering/hot wire carving, vacuum forming stretcher and frame construction, band/chop saw, belt sanding/ hand modelling in wax/papier-mâché/clay/ relief carving wood/plaster/sand/alginat/mod-roc casting/ latex/resin and fibreglass/silicone/plaster mould-making/ curating and installation of 2d/3d/sound/video installation artworks
- Drawing, painting and mark-making - observational drawing from still life/life model/environment/ wet and dry techniques on paper/canvas/alternative materials/ golden section rule of proportion/composition
- Photography and computer based techniques/ studio/environmental digital/black and white photography - photographic manipulation- pc/applemac platforms/ html/css - mac operating/graphic design

Exhibitions Curated (*curated independently)

2011	WSAMA	Winchester School of Art, UK
2008	How to tell yourself from a tv	En Plo Gallery, Pafos, Cyprus
2007	* Unnatural Selection	Tc's Rock Bar, Pafos, Cyprus
2005	* Sarah Misselbrook (catalogue)	Havant Arts Centre, Havant, UK
2003	* Feast Your Eyes (catalogue)	Beatrice Royal Gallery, Eastleigh, UK

Collections

Oversized • private collection UK 1999
Tart • private collection Australia 2003
Going That Same Way • private collection UK 2004
You, Me, Her • private collection UK 2007
Ruining • private collection Cyprus 2007
Devouring • private collection Cyprus 2007
Improving • private collection Cyprus 2007
Denial • private collection Cyprus 2007
Refusal • private collection Cyprus 2007
Dismissal • private collection Cyprus 2007
Every time I look in the mirror • private collection Cyprus 2007
This is what I see • private collection Cyprus 2007
Every time II • private collection Cyprus 2007
Beware of her appetite I • private collection Cyprus 2007
When will it change? • private collection Cyprus 2008
Penetrable • private collection Cyprus 2008
Approachable • private collection Cyprus 2008
Desirable • private collection Cyprus 2008
Trouble with this is - triptych • private collection Cyprus 2008
I Dream of a Common Language • private collection UK 2012

Bibliography (reviews/ articles/ interviews)

Nema McMorran, "Sarah Misselbrook Unnatural Selection," *Arteri*, Issue 5, February 2008
Culture Editor, How to tell yourself from a TV Television Interview, Omega Channel, Pafos, Cyprus, February 1, 2008
Culture Editor, Unnatural Selection TV Television Interview, Omega Channel, Kato Pafos, Cyprus, October 8, 2007
Kate Thompson, "Affirmation of a genuine talent," *The Daily Echo* Tuesday, July 4, 2006
David Newble, "All for art at Bargate," *The Daily Echo* Saturday, May 27, 2006
Richard Cartridge, Affirmation Radio Interview, BBC Radio Solent, BBC Radio Solent, Southampton, May 28, 2006
David Newble, "Bargate has a brush with art," *The Daily Echo* Thursday, May 25, 2006
David Newble, "The Bargate becomes an art centre," *The Daily Echo* Thursday, April 27, 2006
Arts Journalist, Affirmation Radio Interview, BBC Radio Solent, Southampton, March 15, 2006
Ali Kefford, "a space for modern art," *Hampshire Society* magazine September, 2004
The Arts Editor, "Chance to meet artists at vaults," *The Daily Echo* Saturday, September 11, 2004
The Arts Editor, "Art Review," *Pout* magazine August, 2004
Jess Husband, "Local artists celebrate going underground in the city," *The Daily Echo* Saturday, August 7, 2004
Chris Coneybeer, ArtVaults Television Interview, BBC South, Castle Vault, Southampton, July 20, 2004
The Arts Editor, "Female artists' work on display," *Petersfield Post*, Wednesday, March 17, 2004
The Arts Editor, "Artist ready to give talk on her inspiration," *The Daily Echo* Tuesday, January 27, 2004
The Arts Editor, "Exhibition: Mind Consuming Body/ And Light Escapes," *The Daily Echo* Friday, January 16, 2004
Andrew White, "Art and soul on show," *The Daily Echo* Thursday, January 15, 2004
Katherine Cleave, "Chocol-art & Film Classics: it's still life," *Eden* November, 2003
Geoffrey Williams, "Sarah Misselbrook: An Artist with Ambition," *Hampshire the county* magazine September, 2003
Duncan Eaton, "Don't let the Feast become a Famine," *The Daily Echo* Saturday, August 2, 2003
The Editor, "Sarah Misselbrook," *And Magazine* July, 2003
The Editor, "Art for business' sake," *The Daily Echo* Tuesday, June 3, 2003
The Editor, "Art Gallery gets down to business," *The Daily Echo* Monday, May 26, 2003
The Editor, "We were plastered!," *The Daily Echo* Saturday, October 26, 2002
Kate Thompson, "Suffering for her art," *The Daily Echo* weekend magazine Saturday, August, 2002

References

James Robinson
Head of Art and Design
North London Collegiate School Jeju
San 1-6 Gueok-lee
Daejung-eup
Seogwipo City
Jeju
699-931
Republic of Korea
jmrobinson@nlcsjeju.kr

Nick Stewart
Winchester School of Art
University of Southampton
Park Ave
Winchester
Hampshire
SO23 8DL
United Kingdom
+44 23 8059 6900
wsasos@soton.ac.uk

Daniel Crow - Director
a space arts organisation
Tower House,
Town Quay Road,
Southampton,
SO14 2NY
United Kingdom
+44 23 8033 8778
dan@spacearts.org.uk